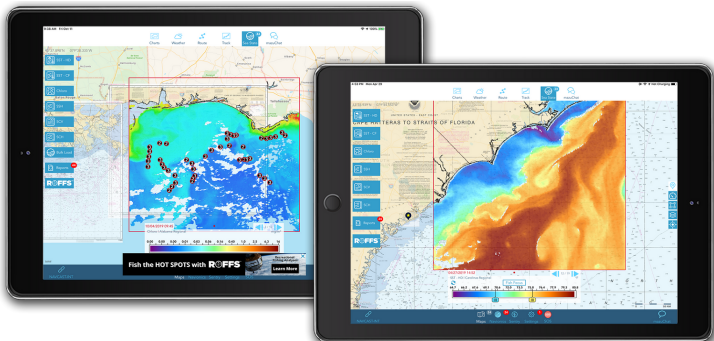




FOR-HIRE APPROVED

The SkyMate m1600VMS is approved for your forms and hardware requirements.

SkyMate provides you additional benefits to improve your charter business

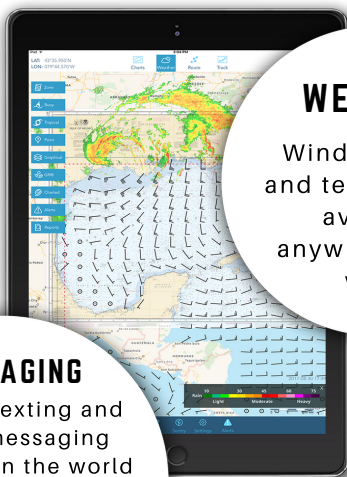


mazu SPORT FISHING

Stay Connected Wherever You Fish.

mazu SportFishing keeps you ahead of the game with vital insights and valuable tools designed to help you find fish faster. Access to weather, sea surface temperature, chlorophyll, and instant messaging takes the guess work out of finding fish, saving you time and money.

www.mazu-marine.com/sportfishing



WEATHER

Wind and wave and text forecasts available anywhere in the world

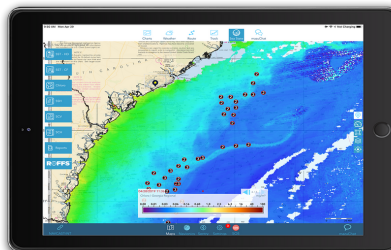
MESSAGING

Offshore texting and instant messaging anywhere in the world with your

mCrew app

or

mazu chat app



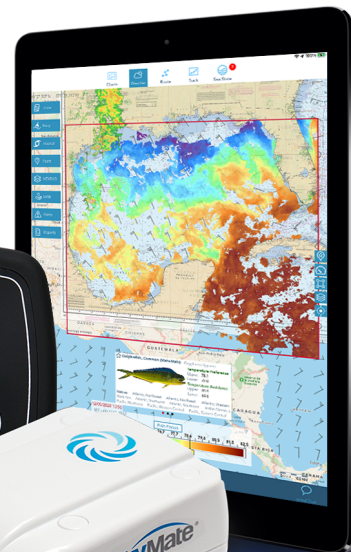
ROFFS™ provides customized fishing forecasting analysis of the real-time ocean conditions derived from a number of different satellite data sources guiding you to the most productive offshore waters and increasing your chances for a successful fishing trip while saving you time and fuel.

Get the best fishing data while offshore with mazu sportfishing and SkyMate m1600VMS!

**iPad not included.



ROFFS™ analyses are also compatible with mazu SportFishing App. where our hot spot locations are overlaid on the App data for accurate guidance and you are able to open our analysis directly in the App for reference. See more at www.roffs.com or [@roffsfishing](https://www.instagram.com/roffsfishing) on [Facebook](https://www.facebook.com/roffsfishing) or [Instagram](https://www.instagram.com/roffsfishing).



SOS



GLOBAL SEARCH AND RESCUE

- 2-way communications
- Automatic position updates

USER FRIENDLY



EASY TO INSTALL AND OPERATE

- Plug-and-play right out of the box

LOW MONTHLY COST



FLEXIBLE AND AFFORDABLE

- SkyMate gives much more for less!

ADD ON OPTIONS

+ SENTRY

Boat monitoring and control

- Smart boat monitoring system
- Always on always connected

+ SKYTRACKER

At home tracking

- Shore side based tracking of a single vessel or a fleet



Technical Details

ENVIRONMENTALS

- Operating: -25°C to 55°C
- Non-Operating: -35°C to 60°C
- IEC 60945, EN 60529, IP67

POWER MANAGEMENT

- For operation in both nominal 12VDC and 24VDC battery systems
- Less than 5W power required (fully configured)
- Reverse wiring polarity protection
- Continuous over-voltage protection

CONFIGURATION MANAGEMENT

- Firmware updates over satellite and via terminal

SYSTEM FEATURES

- Customizable Geo-fencing
- Global Search and Rescue
- Compatible with Android, Apple, Raymarine Axiom, and Si-Tex NavStar